



DROYLSDEN
Academy

Prevent Duty Policy

The current threat from Terrorism and Extremism in the United Kingdom is real and severe and can involve the exploitation of vulnerable people, including children to involve them in extremist activity.

This policy is designed to provide guidance for the school to respond to safeguarding concerns for those children and young people who may be vulnerable to the messages of extremism. In addition, it provides details of the local inter agency process and expectations in identifying appropriate interventions based on the child concern model/ threshold of need and intervention model and the Channel process. (See below)

Radicalisation is defined as the process by which people come to support terrorism and extremism and, in some cases, to then participate in terrorist groups.

“Extremism is vocal or active opposition to fundamental British values, including democracy, the rule of law, individual liberty and mutual respect and tolerance of different faiths and beliefs. We also include in our definition of extremism calls for the death of members of our armed forces, whether in this country or overseas” (HM Government Prevent Duty 2015)

How will we protect our children?

- By promoting fundamental British Values and enabling them to challenge extremist views
- By providing a safe place in which young people and staff can understand the risks associated with terrorism and develop the knowledge and skills to be able to challenge extremist arguments

Links with Ofsted:

From September 2015, Ofsted will expect to see evidence of specific references to safeguarding arrangements to promote students’ welfare and prevent radicalisation and extremism. (DFE The Prevent Duty: Departmental Advice for Schools 2015)

1 Purpose:

1.1. This “Preventing Radicalisation Policy” is part of our commitment to keeping children safe. Since the “Education and Inspections Act 2006”, schools have a duty to promote community cohesion. Over the last few years, global events have led to a growth of extremist viewpoints, including advocacy of violent extremism.

1.2. Schools have an important part to play in both educating children and young people about extremism and recognising when pupils start to become radicalised. From 1 July 2015, schools became subject to a duty under section 26 of the Counter-Terrorism and Security Act 2015 (“CTS 2015”) in exercising their functions “to have due regard to the need to prevent people from being drawn into terrorism.”

1.3. Safeguarding children from all risks of harm is an important part of a school’s work and protecting them from extremism is one aspect of that.

1.4. The duty to prevent children and young people being radicalised is set out in the following documents:

- Counter Terrorism and Security Act (2015)
- Keeping Children Safe in Education Sept 2022
- Working Together to Safeguard Children (2022)
- Prevent Duty Guidance: for England and Wales (March 2015)
- The Prevent duty: Departmental advice for schools and child minders (June 2015)
- The use of social media for on-line radicalisation (July 2015)

1.5. Non-statutory guidance:

- Promoting fundamental British values as part of SMSC in schools: Departmental advice for maintained schools (DfE 2014)
- Improving the spiritual, moral, social and cultural (SMSC) development of pupils: supplementary information (DfE 2014)
- How Social Media is used to encourage travel to Syria and Iraq (Home Office)

2 Ethos:

2.1. We ensure that through our school vision, values, rules, diverse curriculum and teaching, we promote tolerance and respect for all cultures, faiths and lifestyles. The Head Teacher ensures that this ethos is reflected and implemented effectively in school policy and practice and that there are effective risk assessments in place to safeguard and promote students' welfare.

3 Risk Assessment:

3.1. We assess the risk of radicalisation to be [low/medium/high].

3.2. We will carry out an annual risk assessment which will identify the risk of pupils being drawn into terrorism or extremism. This risk assessment will look at the general risks affecting children and young people in the local area and the specific risks which may affect groups or individuals within the school and it will propose measures to mitigate and manage these risks.

4 Responsibilities and Training:

4.1. The Designated Prevent Lead will liaise regularly with the Headteacher on matters relating to the Prevent duty and will monitor the school's compliance with this duty, primarily by way of term updates from the Designated Safeguarding Lead ("DSL") and by conducting an annual review (see Safeguarding policy) into the School's compliance with its Prevent duty. As part of this process the Designated Prevent Lead will:

4.1.1. ensure that this policy is understood and effectively implemented by staff throughout the School;

4.1.2. ensure that the DSL's undergo appropriate Prevent duty training which is refreshed at least every two years; and

4.1.3. ensure that the School's Prevent policies and procedures and general safeguarding arrangements take into account the policies and procedures of Local Safeguarding Children's Boards ("LSCBs").

4.2. The DSL will:

4.2.1. be the single point of contact to oversee and coordinate the school's implementation of the Prevent duty;

4.2.2. undertake prevent awareness training, such as the on-line general awareness training module on Channel - WRAP (Workshop to Raise Awareness of Prevent);

4.2.3. undertake higher level training to be able to assess the risk of children being drawn into terrorism, including being drawn into support for the extremist ideas that are part of terrorist ideology;

4.2.4. provide Prevent duty training to all staff so that they (a) understand the general risks affecting pupils at the School; (b) are able to identify individual children who might be at risk of radicalisation; and (c) know what to do to support these children;

4.2.5. provide advice and support to other members of staff on protecting pupils from the risk of radicalisation;

4.2.6. liaise with the Designated Prevent Lead and local partners, including the Police and the LCSB (Local Children's Safeguarding Board), including to establish what advice and support they can provide and to seek guidance on the general levels of risk within the local area;

4.2.7. have responsibility for ensuring that any visiting speakers whether invited by staff or pupils are suitable and are appropriately supervised (see below);

4.2.8. receive safeguarding concerns about children and young people who may be vulnerable;

4.2.9. work in partnership with the LSCB on all matters covered by this policy and the School will follow any locally agreed procedures which are set out by the LSCB;

4.2.10. report each term to the Head Teacher on these matters.

4.3. All staff will:

4.3.1. undergo regular Prevent duty training (including Channel online awareness training and additional in-house training) so that staff have the knowledge and confidence to be able to (a) understand the general risks of radicalisation affecting pupils at the School; (b) identify individual children who might be at risk of radicalisation (see Paragraph 8 below) and spot signs of extremism (see paragraph 9 below); (c) challenge extremist views; and (d) provide appropriate advice to children who are at risk of radicalisation.

4.3.2. be alert to changes in children's behaviour which could indicate that they may be in need of help or protection.

4.3.3. use their professional judgement in identifying children who might be at risk of radicalisation and act proportionately.

5 Referral Process:

5.1. All staff and visitors to the School must refer all concerns about children and young people who show signs of vulnerability to radicalisation to the Designated Safeguarding Lead (DSL) or in their absence to the Deputy Safeguarding Lead (Deputy DSL). For further details about safeguarding referrals please see the School's separate policy entitled Safeguarding: Child Protection Procedures.

5.2. If the DSL becomes aware of a concern relating to the radicalisation of a pupil he or she will discuss this with the Head and the LSCB so that appropriate actions can be taken to safeguard the pupil and appropriate referrals, including to the Channel programme, can be made.

6 Curriculum

6.1. We are committed to ensuring that our pupils are offered a broad and balanced curriculum that aims to

prepare them for life in modern Britain. We encourage our pupils to be inquisitive learners who are open to new experiences and are tolerant of others.

6.2. Our values support the development of the whole child as a reflective learner within a calm, caring, happy and purposeful atmosphere. Teaching the school's core values alongside the fundamental British Values supports quality teaching and learning, whilst making a positive contribution to the development of a fair, just and civil society;

6.3. We aim to provide a safe space in which pupils can understand the risks associated with terrorism and develop the knowledge, skills and confidence to be able to challenge extremist views.

6.4. We will include opportunities in the curriculum for pupils to build resilience to pressure and to develop the skills they need to recognise and stay safe from abuse and radicalisation. In particular:

6.4.1. Pastoral and Life Skills lessons will be used along with tutor periods/form periods to teach pupils to understand and manage risks associated with terrorism and radicalisation, resist pressure, make safer choices and seek help if necessary.

6.4.2. By promoting British values such as tolerance and respect as indicated above;

6.4.3. Through citizenship, religious education and other relevant subject syllabus with focus on democracy, diversity, mutual respect and managing debates around contentious issues.

7 Internet Safety:

7.1. The internet provides children and young people with access to a wide-range of content, some of which is harmful. Extremists use the internet, including social media, to share their messages. The filtering systems used in our school blocks inappropriate content, including extremist content.

7.2. Pupils will be taught how to stay safe online, both in school and outside school. They will be taught to understand the risks posed by adults or young people who use the internet and social media to groom, abuse or radicalise other people, especially children, young people and vulnerable adults.

7.3. We also filter out social media, such as Facebook. Searches and web addresses are monitored and the ICT technicians will alert the DSL and Head where there are concerns and prevent further access when new sites that are unblocked are found.

7.4. Where staff, students or visitors find unblocked extremist content they must report it to the DSL who will in turn discuss it with the Head.

7.5. We are aware that children and young people have access to unfiltered internet when using their mobile phones and staff are alert to the need for vigilance when pupils are using their mobile phones or other electronic devices.

8 Visitors and visiting Speakers:

8.1. The DSL has responsibility for ensuring that all visitors and visiting speakers, whether invited by staff or pupils, are suitable and appropriately supervised. Where appropriate the DSL will make enquiries of the agency/person who introduced the individual to the School and/or will undertake appropriate due diligence.

8.2. On the rare occasion that a visitor or visiting speaker will have unsupervised access to pupils they will need to be DBS checked.

9 Signs of Vulnerability:

9.1. There are no known definitive indicators that a young person is vulnerable to radicalisation, but there are a number of signs that together increase the risk. Signs of vulnerability include but are not limited to:

- 9.1.1.** underachievement;
- 9.1.2.** being in possession of extremist literature;
- 9.1.3.** poverty;
- 9.1.4.** social exclusion;
- 9.1.5.** traumatic events;
- 9.1.6.** global or national events;
- 9.1.7.** religious conversion;
- 9.1.8.** change in behaviour;
- 9.1.9.** extremist influences;
- 9.1.10.** conflict with family over lifestyle;
- 9.1.11.** confused identity;
- 9.1.12.** victim or witness to race or hate crimes; and
- 9.1.13.** rejection by peers, family, social or faith groups.

10 Recognising Extremism:

10.1. A part of our wider safeguarding responsibilities to identify signs of abuse we will be alert to early indicators of radicalisation or extremism which may include:

- 10.1.1.** showing sympathy for extremist causes;
- 10.1.2.** glorifying violence;
- 10.1.3.** making remarks or comments about being at extremist events or rallies outside school;
- 10.1.4.** evidence of possession of illegal or extremist literature;
- 10.1.5.** advocating messages similar to those coming from illegal organisations or other extremist groups;
- 10.1.6.** out of character changes in dress, behaviour and peer relationships (but there are also very powerful narratives, programmes and networks that young people can come across online so involvement with particular groups may not be apparent);
- 10.1.7.** secretive behaviour;
- 10.1.8.** online searches or sharing extremist messages or social profiles;
- 10.1.9.** intolerance of difference, including faith, culture, gender, race or sexuality;
- 10.1.10.** graffiti, art work or writing that displays extremist themes;
- 10.1.11.** attempts to impose extremist views or practices on others;
- 10.1.12.** advocating violence towards others.

11 Contact Details:

11.1. Contact details of local partners and organisations which offer support and advice about extremism are accessible through the DSL

11.2. These will include the local authority Prevent lead, Local Authority Designated Safeguarding Office the local Channel contact and the local police force, 101 and the DfE dedicated telephone helpline and mailbox for non-emergency advice for staff:

12 Channel:

12.1. Channel is a programme which focuses on providing support at an early stage to people who are identified as being vulnerable to being drawn into terrorism. It provides a mechanism for schools to make referrals if they are concerned that an individual might be vulnerable to radicalisation. An individual's engagement with the programme is entirely voluntary at all stages.

12.2. Section 36 of the CTSA 2015 places a duty on local authorities to ensure Channel panels are in place. The panel must be chaired by the local authority and include the police for the relevant local authority area. Following a referral, the panel will assess the extent to which identified individuals are vulnerable to being drawn into terrorism, and where considered appropriate and necessary consent is obtained, arrange for support to be provided to those individuals.

12.3. Section 38 of the CTSA 2015 requires partners of Channel panels (including proprietors of independent schools) to co-operate with the panel in the carrying out of its functions and with the police in providing information about a referred individual.

12.4. Guidance issued under section 36(7) and section 38 (6) of the CTSA 2015 in respect of Channel is available at:

<https://www.gov.uk/government/publications/channel-guidance>

13 Monitoring and Review:

13.1. This Policy will be reviewed by the Headteacher and the DSL

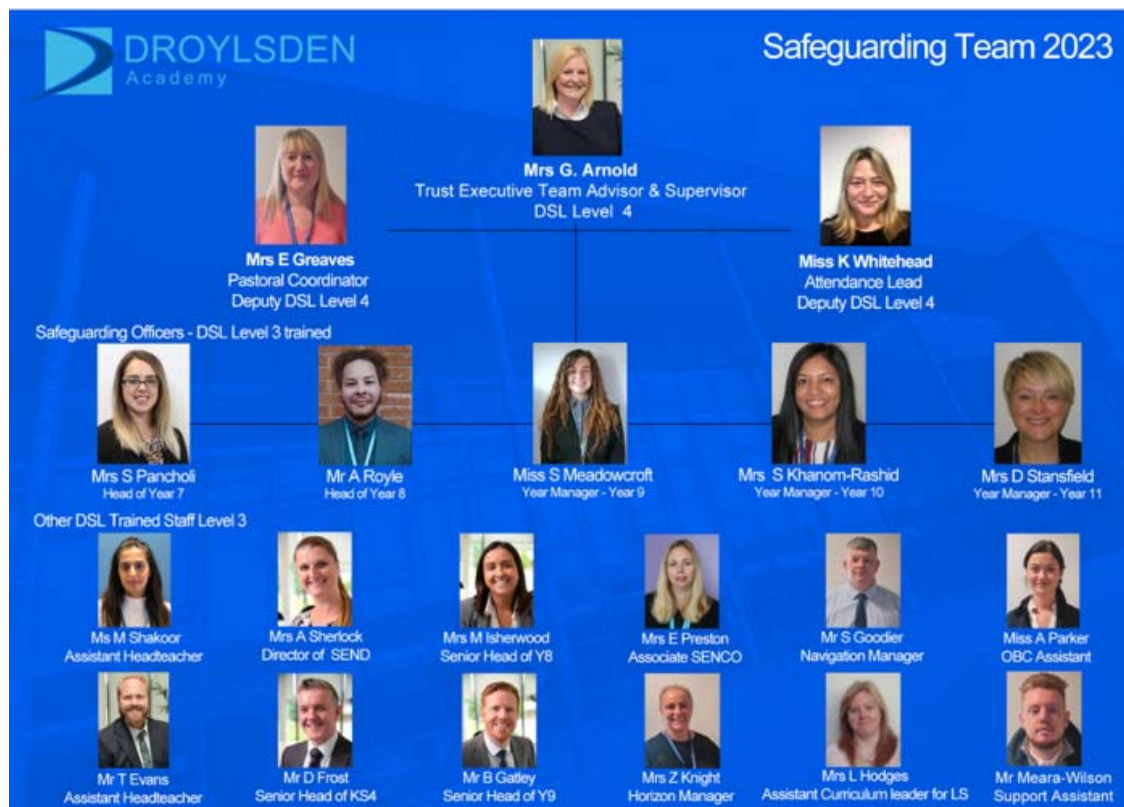
13.2. The effectiveness and implementation of this policy will be monitored by the DSL who will carry out an annual review for this purpose. For further information see the School's separate policy on Safeguarding.

Related Policies, Guidelines, Templates and Forms:

- Anti-Bullying Policy
- Attendance Policy
- Equality & Diversity Policy
- School Behaviour Policy
- Safeguarding: Child Protection Policy & Procedures
- Safeguarding: Procedures for Dealing with Allegations of Abuse against Teachers & Other Staff – please see the Child Protection & Safeguarding Policy
- Safeguarding: Safer Recruitment Policy & Procedure
- Safeguarding: Code of Conduct for School based Staff
- Whistleblowing Policy
- Lost or Missing Children Policy - Appendix 1 of the Child Protection & Safeguarding Policy
- Acceptable use of ICT Policy
- PSHE Policy
- SMSC Policy

Sharing a concern/reporting an incident:

If staff have any concerns about particular students or groups of students, as with other safeguarding matters, they should be reported to the Child Protection and Safeguarding Team:



Local authority's out of hours contact number: 0161 342 2222

Where there is a risk of immediate serious harm to a child a referral should be made to children's social care immediately by the DSL. If a child is in immediate danger call 999.

Local Police Emergency 999

Local Police non-emergency 101

National Contacts

NSPCC 24/7 Helpline – text line Tel: 0808 800 5000/~~88858~~

Email: help@nspcc.org.uk

DfE Prevent Helpline

for schools & parents Tel: 020 7340 7264 (non-emergency) (Freephone 0300 323 0169)

Email: counter.extremism@education.gsi.gov.uk

National Bullying Helpline Tel: 0845 22 55 787(Freephone 0300 323 0169)

Email: help@nationalbullyinghelpline.co.uk